



Year 1 Newsletter

Friday 8th February 2019

Pupils' achievement for last week:

Bees - Catherine and Aarya

Butterflies – Success and Afia

Caterpillars - Valeria and Zacariya

Ladybirds – Xavier and Zoey



English:

English next week will be linked to Geography where we have been learning about hot and cold countries. The children will be writing postcards from a hot country.

Things to do at home to help with English

Help them learn the spellings in bold as they will be tested next week. **Monday, Tuesday, Wednesday, Thursday, Friday, Saturday and Sunday.**

Get children to understand that when writing a postcard phrases are often used. e.g. Having a lovely time. Wish you were here. It's very warm and sunny.

Maths

We will be doing addition and subtraction facts to 20. The children will be using different methods to add and subtract, e.g. counting back number-lines and number bonds

Things to do at home

Help your child to write their numbers correctly. Also help them understand their number facts family. e.g.

$$11+9=20 \quad 20-9=11$$

$$9+11=20 \quad 20-11=9$$

$$16+ _ = 20 \quad _ + 16 = 20$$

$$20 - _ = 16 \quad 20 - _ = 4$$

Science

We will use the data we collected last week on the weather to make pictogram.

Geography

They will be choosing a hot and a cold country to visit and sorting items to take with them to each country.

ICT

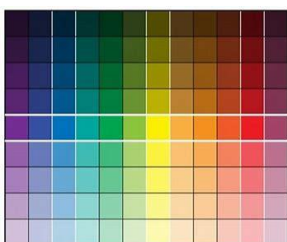
We will be using Bee Bot to do coding.

RE

We will continue learning how Christians pray and focus on **The Lord's Prayer.**

Art

The children will be making different shades of colour by adding white and black.

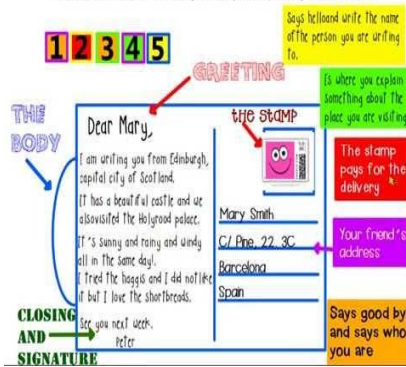


Book bags with reading book and reading record should be brought to school daily.



PE kits must be brought in on Monday and left until the end of the week. Make sure all items are labelled please.

EXAMPLE OF A POSTCARD FROM SCOTLAND



Value of the Month – Hard work



Attendance w/e 01/02/19

Whole school attendance: 94%

Bees: 93.3%

Butterflies: 94.2%

Caterpillars: 94.8%

Ladybirds: 98%

Congratulations to Ladybirds class with the highest attendance in Yr1

The National expectation is that attendance should exceed 96.5%.